

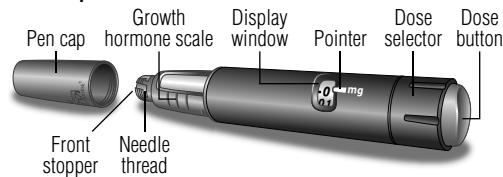
INSTRUCTIONS FOR USE

Norditropin® FlexPro® (somatropin [rDNA origin] injection)

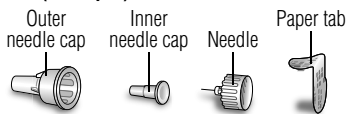
10 mg/1.5 mL (blue) Prefilled Pen

Read these instructions before using your Norditropin® FlexPro® pen.

Norditropin® FlexPro®



Needle (example)

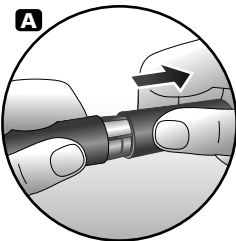


Norditropin® FlexPro® contains 10 mg human growth hormone solution and delivers doses from 0.05 mg to 4 mg, in increments of 0.05 mg. Norditropin® FlexPro® is made to be used with Novo Nordisk® disposable needles. Needles are not included with Norditropin® FlexPro®.

Prepare your Norditropin® FlexPro® pen

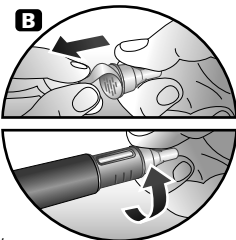
A.

- Pull off the pen cap.
- Check that the liquid in the pen is clear and colorless by tipping it upside down 1 or 2 times. If the liquid looks unclear or cloudy, do not use the pen.
- Wash hands well and dry them.
- Wipe the front stopper on the needle thread with an alcohol swab



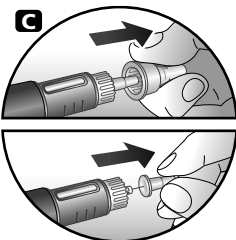
B.

- Take a new disposable needle.
- Tear the paper tab off and screw the needle straight onto the pen.
- Make sure the needle is on tight.
- Never place a disposable needle on your Norditropin® FlexPro® pen until you are ready to give an injection.



C.

- Pull off the outer needle cap and inner needle cap and throw them both away.
- If you try to put the needle caps back on, you may accidentally hurt yourself with the needle.
- A drop of liquid may appear at the needle tip. This is normal.



Important:

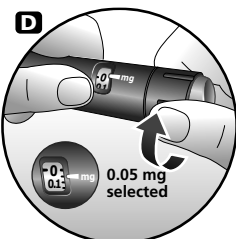
- **Always use a new needle for each injection. This will help prevent contamination.**
- **Never bend or damage the needle.**

Check the growth hormone flow (airshot)

Make sure that you receive your full dose by checking the growth hormone flow (performing an airshot) before you select and inject your first dose from a new pen.

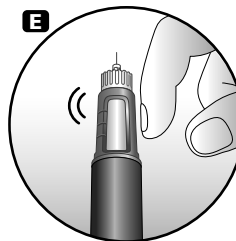
D.

Turn the dose selector to select 0.05 mg. This is the smallest amount of medicine for a dose.



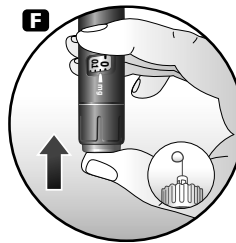
E.

- Hold the pen with the needle pointing up.
- Tap the top of the pen gently a few times to let any air bubbles rise to the top.



F.

- Press the dose button until the "0" in the display window lines up with the pointer and a drop of liquid appears at the needle tip.
- If no drop appears, repeat steps D, E, and F up to 6 times.
- If no drop appears after these attempts, change the needle and repeat steps D, E, and F one more time.
- **If a drop of liquid still does not appear, call (1-888-668-6444) for help.**



Important:

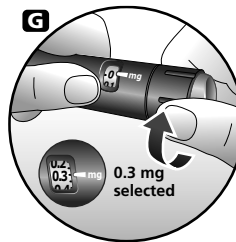
- **Be careful not to drop Norditropin® FlexPro® pen or knock it against a hard surface. If this happens you will need to repeat the airshot.**
- **Always make sure that a drop appears at the needle tip after completing your airshot.**

Select your dose

Use the dose selector on your Norditropin® FlexPro® pen to make sure you have the exact dose selected. You can select up to 4 mg per dose.

G.

- Select or adjust the dose you need by turning the dose selector forwards or backwards until the right number of mg lines up with the pointer.
- When dialing back, be careful not to press the dose button as liquid will come out.
- To guide you, the dose selector clicks differently when turned forwards, backwards or past the number of mg that is left in the pen.
- When the pen has less than 4 mg, the dose selector stops at the number of mg that is left in the pen.



How much growth hormone is left in the pen?

You can use the growth hormone scale to see how much growth hormone is left in the pen.

You can use the dose selector to see exactly how much growth hormone is left in the pen. If the pen contains less than 4 mg, turn the dose selector until it stops. The figure that lines up with the pointer shows how many mg are left in the pen.

- You cannot set a dose higher than the number of mg left in the pen.
- If there is not enough Norditropin® left in the pen to deliver your full dose, use a new Norditropin® FlexPro® pen to inject the remaining amount of your dose or contact your healthcare provider.
- Be sure to subtract the dose already received. For example, if your dose is 0.6 mg and you can only set the dose selector to 0.3 mg, you should inject another 0.3 mg with a new Norditropin® FlexPro® pen.

Important:

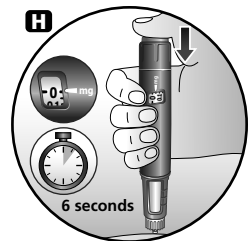
- **Never use the pen clicks to count the number of mg you select. Only the display window and pointer will show the exact number.**
- **Never use the growth hormone scale to measure how much liquid to inject. Only the display window and pointer will show the exact number.**

Inject your dose

Make sure that you receive your full dose by using the injection technique recommended by your healthcare provider. This medicine is injected under your skin (subcutaneous) only.

H.

- Insert the needle into your skin as your healthcare provider has shown you.
- Press and hold the dose button to inject until the "0" in the display window lines up with the pointer. As you do this, you may hear or feel a firm click.



- If you remove your finger from the dose button before the "0" is in the display window the full dose has not been delivered. Leave the needle in the skin and press and hold the dose button again until the "0" lines up with the pointer.

If "0" does not appear in the display window, you did not receive the full dose. Call (1-888-668-6444) for assistance.

- After the "0" in the display window lines up with the pointer, leave the needle under the skin for at least **6 seconds** to make sure that you get your full dose. You can let go of the dose button while you wait.

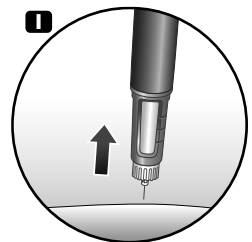
- Change the injection site using the injection procedure recommended by your healthcare provider.

Important:

- **Always press the dose button to inject the dose. Turning the dose selector will not inject the dose.**
- **Never touch the display window when you inject, as this can block the injection.**

I.

- Remove the needle from your skin. After that, you may see a drop of liquid at the needle tip. This is normal and does not affect the dose you received.
- After the injection, remove the needle right away and put the pen cap back on. If the needle is not removed, some liquid may come out of the Norditropin® FlexPro®.
- Unscrew the needle and throw away the needle and any empty Norditropin® FlexPro® pen as directed by your healthcare provider. A special "sharps" container (such as a red biohazard container), a hard plastic container (such as an empty detergent bottle), or a metal container (such as an empty coffee can) should be used. The container should be sealed and disposed of properly.
- Caregivers should be most careful when handling used needles to avoid hurting themselves.



Care for your Norditropin® FlexPro® pen

You must take care of your Norditropin® FlexPro® pen:

- Do not drop your pen or knock it against hard surfaces. If you do drop it or think that something is wrong with it, always screw on a new disposable needle and check the growth hormone flow (airshot) before you inject.
- Do not try to refill your disposable pen – it is prefilled.
- Do not try to repair your pen or pull it apart.
- Do not expose your pen to dust, dirt or any kind of liquid.
- Do not try to wash, soak or lubricate your pen. You may clean the Norditropin® FlexPro® pen with a mild detergent on a moistened cloth. See section "How do I store Norditropin®?" above for information about how to store your pen.
- Always keep your pen and needles out of reach of others, especially children.
- Never share your needles and pen with anyone.

Date of Issue: March 2, 2010

Version: 1

US Patent Nos. 6,235,004; 6,004,297; 6,582,404; 6,716,198; 6,899,699; 5,849,704; 5,691,169; 5,618,697 and other patents pending.

Norditropin®, FlexPro®, and Norditropin NordiFlex® are registered trademarks of Novo Nordisk Health Care AG.

Novo Nordisk® is a registered trademark of Novo Nordisk A/S.

© 2004-2010 Novo Nordisk Health Care AG

Manufactured by:
Novo Nordisk A/S
DK-2880 Bagsvaerd, Denmark
140984 3/10

